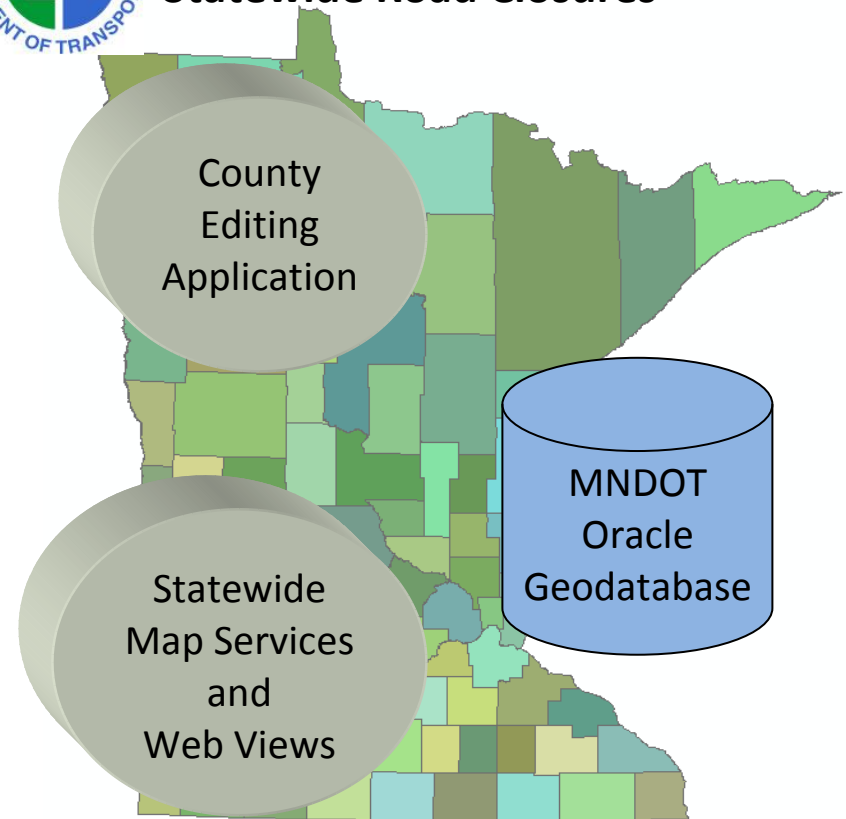
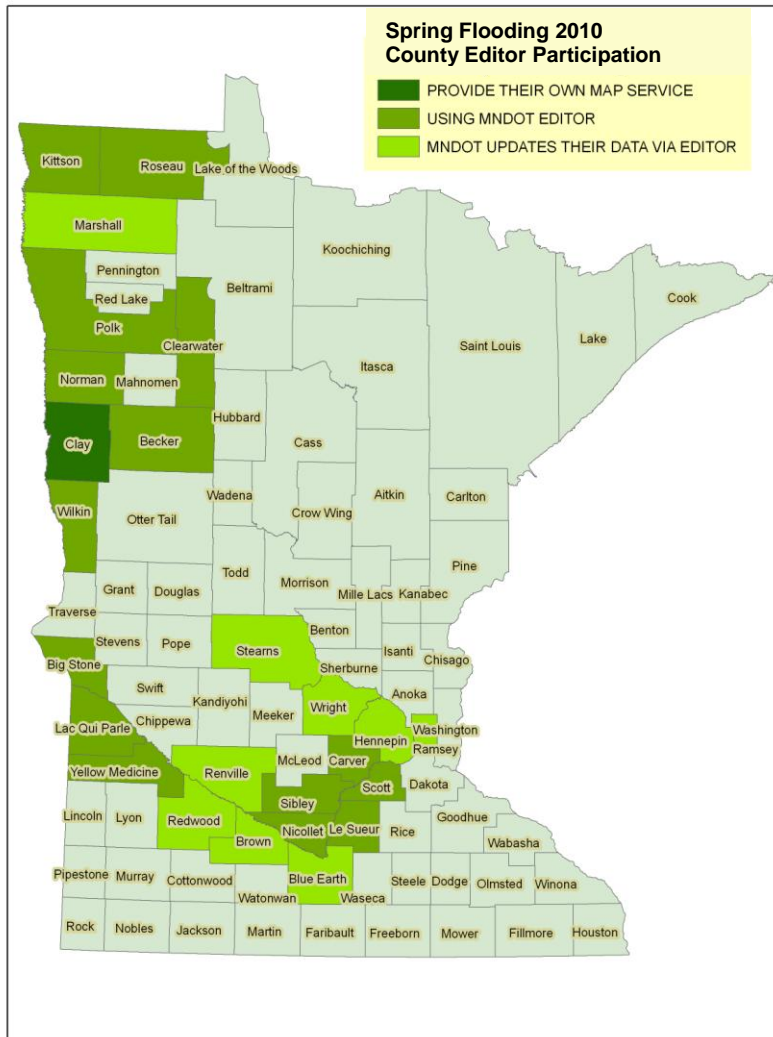




MNDOT EGIS Emergency Management Statewide Road Closures



The State of Minnesota has a system that allows users to enter and manage road status for unplanned road closures and traveler warnings. The system is hosted by the Minnesota Department of Transportation and is available to all Minnesota County officials to enter road status using an editing application. All Minnesota road events entered in the application can then be shared and viewed via the Mn/DOT website for a common view of all road closures regardless of which jurisdiction has closed a road. In addition to entering closure status, users can enter information regarding the extent of damage, time the damage was reported, and when the road reopened. This information will help to track damage and better report on the extent of closures.

For more information contact the Mn/DOT EGIS Team:
GISinfo.DOT@state.mn.us

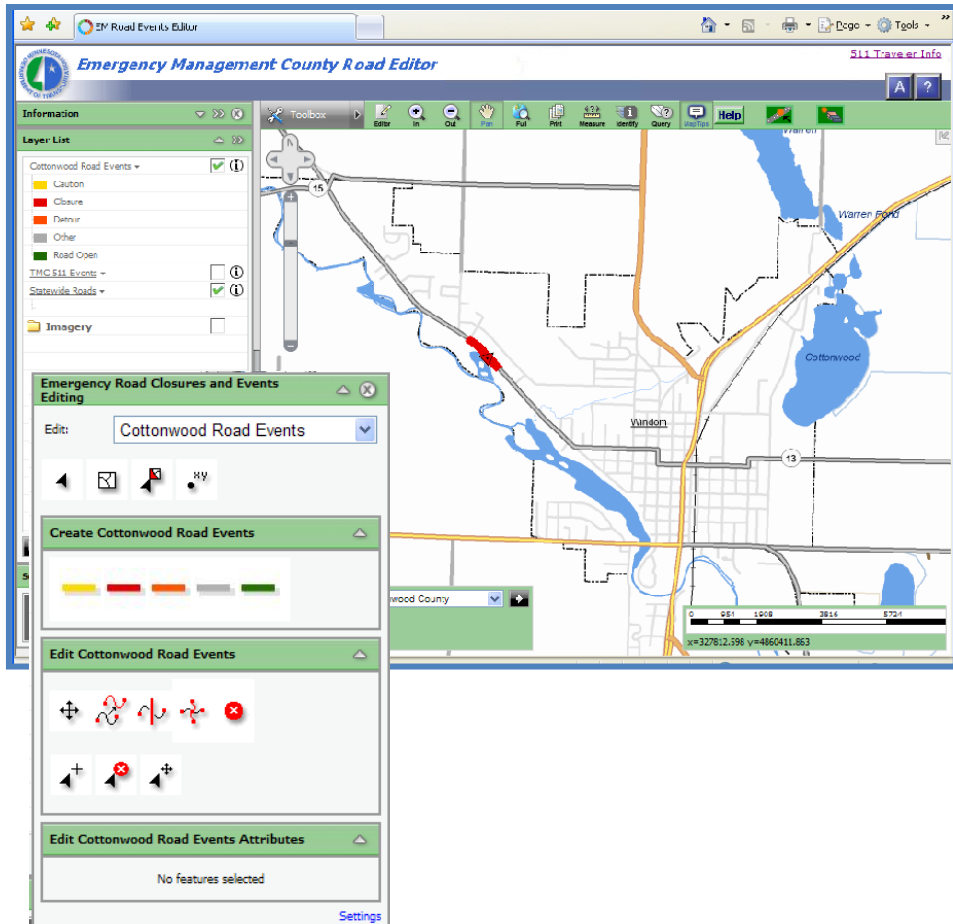


County Editing Application

System Key Benefits

1. Print maps and reports of Road Closures
2. Process FEMA reports more quickly due to the ability to track damage
3. Easy access
4. Provides better communication with the public

The Emergency Management County Road Editor is accessed via the internet and requires a login for each county. Counties are in control of maintaining their own road closures and events.



All of the county data is accessed by a read-only Map Service that is provided for open use. It is also used in a viewer application which provides a seamless view of statewide road closures. This allows agencies like the National Guard and HSEM to view all of the road closures and help them plan how to send equipment, supplies and assessment

Statewide Map Services and Web Views

